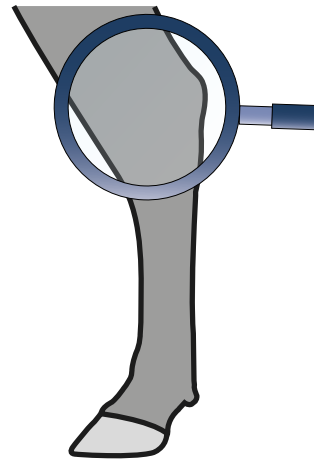


**MADE IN GERMANY**

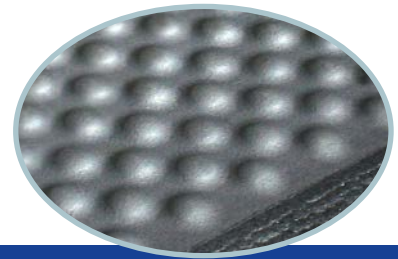


# KRAIBURG TARSA - the focus is on tarsal joints



**NEW** starting April 2017

The comfort zone lying mat with its gentle "hilly landscape" in the tarsal zone



The same cow, the same joint.



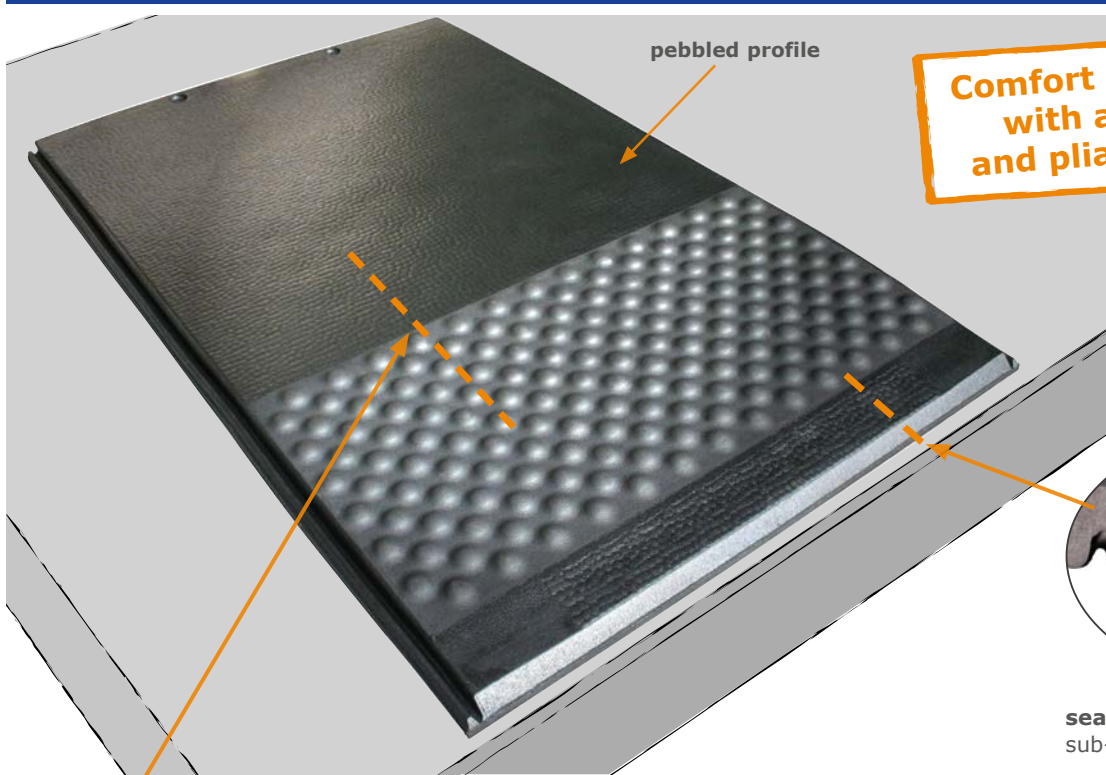
legt die Weide in den Stall

[www.kraiburg-elastik.com](http://www.kraiburg-elastik.com)





# TARSA ★★★★★



Cross section:



front end

rear end

air cushioned structure made of ball shaped segments

additional shock absorption through its blade profile



- ▶ spoils your cows: pliant air cushioned structure made of elastic ball shaped segments



- ▶ gently holds the litter like many small "litter barriers"
- ▶ it can still be cleaned easily



- optimal and permanent softness for every load condition
- the soft lying area within the mat edges supports the correct resting position of the cow
- proven 3-layer structure in the front section
- **specially designed tarsal zone in the rear third of the mat:**
  - ▶ pliant air cushioned structure made of elastic ball shaped segments on the upper side
  - ▶ additional shock absorptive blade profile on the bottom
- pressure relief for sensitive tarsal joints when lying down
- better air circulation keeps the skin drier
- even small amounts of litter are held in place
- improved sure-footedness, especially when getting up and when leaving the cubicle
- integrated soft slope to rear edge promotes drying off



**connecting bar** engages flush with the surface and facilitates professional installation

Significant litter savings compared to deep-litter cubicles. However, some litter is necessary to absorb moisture and increase animal welfare.

### System dimensions:

**thickness:**  
approx. 60 mm

**width:**  
adjustable with  
connecting bar

**mat width:**

112 cm

112 cm

112 cm

**profile width:**

8 cm

13 cm

18 cm

**length:**  
183 cm

**cubicle width:**

120 cm

125 cm

130 cm

**Installation\*:** 2 fixings / mat and 5 screws / profile

### Accessories:

**end-profile** - for closure at side edges of the cubicle row, **width:** 63 mm, **length:** 183 cm, **installation:** 5 screws / profile  
**ergoBOARD / maxiBOARD** - brisket boards



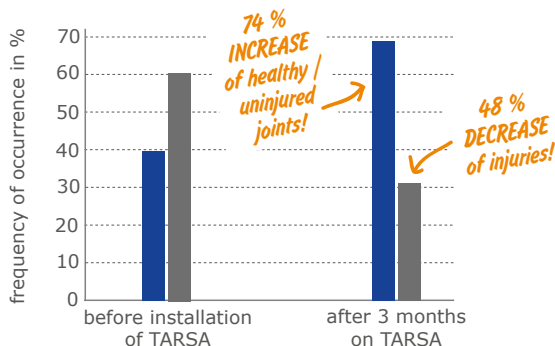
\*Please take notice of the corresponding KRAIBURG specifications and installation instructions with useful advice and tips. You will obtain these at your local KRAIBURG dealer or at [www.kraiburg-elastik.com](http://www.kraiburg-elastik.com).



## Initial results from tests

### TARSA: assessment of tarsal joints

■ healthy / uninjured joints    ■ injuries (skin abrasions / swelling / impact on joints)

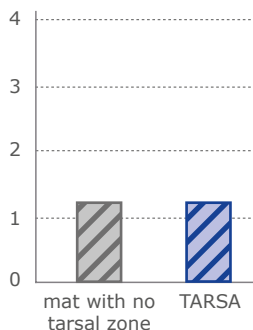


Source: Huber, 2016

**positive effect on tarsal joints: steady improvement in joint health**

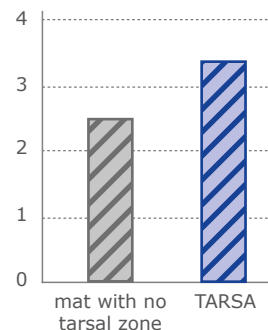
### Cleanness and amount of litter in comparison

**Degree of soiling 9 hours after cubicle maintenance**  
(0=clean, 4=very dirty)



Source: Huber, 2016

**Litter remaining 9 hours after cubicle maintenance**  
(0=none, 4=very much)



**litter is held better on TARSA with the same cleanness**

**Tip:** Chopped and milled straw have proved themselves.

## Field report: operation Niedermayer, Prien, DE



**Anton Niedermayer, Prien, Germany, has a dairy farm with 50 cows. In September 2015 he renovated his cubicles and covered them with TARSA mats.**

„In the beginning I was very sceptical... Can the tarsal zone be cleaned easily? Will the cows like the mats or are they “uncomfortable?” But now I say: SUPER! Super clean and the cows really like the mats. Joint health has developed positively and the sure-footedness, especially when getting up, is striking!“

### Installation – easy and fast

The guidelines to correct installation can be found in the installation instructions!

You will obtain these at your local KRAIBURG dealer or at [www.kraiburg-elastik.com](http://www.kraiburg-elastik.com).

### Tolerances

**Thickness:** +3/-2 mm  
**length + width:** +/- 1.5 %  
 (DIN ISO 3302-1 tolerance class M4)

The tolerances also apply within the mat and when installed.

The products presented here should only be used for the mentioned applications. Technical specifications are subject to alterations. All sales are subject to our General Terms and Conditions. Legal basis is the German version of the document.

### KRAIBURG manufacturer guarantee

TARSA: 10 years

More detailed information is available on request.

### Your KRAIBURG dealer:



10/2016

[www.kraiburg-elastik.com](http://www.kraiburg-elastik.com)

